



**LEGISLATION FOR PRE-TAX
INSURANCE PREMIUM
PAYMENTS**

Excerpts from the NARFE National Website
www.narfe.org

Legislation to allow federal and military retirees to pay their health insurance premiums with pre-tax compensation was introduced into the Senate in early March. The House version of the bill was introduced on February 16.

“Federal and military retirees lose ground every year health insurance premiums skyrocket”, NARFE President Margaret L. Baptiste said. “The Premium Conversion legislation that Senators Warner and Web and Rep. Tom Davis have sponsored would help retirees and survivors living on fixed incomes keep pace with rising health insurance costs.”

**NARFE ASSOCIATION 2007
SCHOLARSHIP
APPLICATIONS DUE APRIL
30, 2007**

Please see pages 57-58 of the March 2007 NARFE Retirement Life magazine for application and eligibility requirements.

GREAT READING!!!

The NARFE Retirement Life magazine always dedicates 6 to 10 pages for readers' questions and answers about retirement. Take a look - your question may be answered there.

**N ational
A ctive
R etired
F ederal
E mployees**

**CHAPTER 860
Cleveland, TN 37312
Spring 2007**

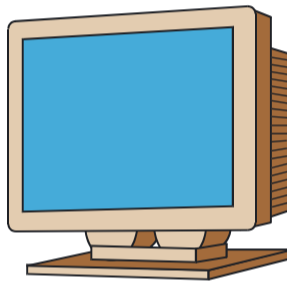
REMEMBER! Next Chapter Meeting

WHAT? Covered Dish Dinner
w/meeting afterwards

WHEN? April 12 - Thurs @ 6:30 PM

WHERE? St Therese Catholic Church

SPEAKER: Mayor Tom Rowland, of
Cleveland, TN, will speak about what's
going on in the city.



Basic informaton
about the Cleveland
Chapter of NARFE
can be viewed
online at

[www.narfecleveland
tn.org](http://www.narfeclevelandtn.org). Access

to our newsletter will be posted there
also.

**A MESSAGE FROM OUR VICE-
PRESIDENT DEAN McALISTER**

Dean will be attending the Tennessee Federation meeting being held in Knoxville April 16-17. He will be serving as the Chairperson of the Service Committee. The committee will consist of four people who will meet on the first day of the meeting to review information obtained from NARFE Headquarters related to Service. On the second day of the meeting, Dean's committee will then report to the entire meeting any needs or questions they feel deserve attention.



NARFE-PAC

Mission and Urgency

(excerpted from NARFE RETIREMENT LIFE, MARCH 2007)

In 1981, the National Executive Board voted to establish NARFE-PAC. The Association leaders have seen an invaluable opportunity for NARFE to participate in our system of privately financed congressional elections. NARFE-PAC, a separate, segregated fund, was established to solicit and receive members' voluntary contributions and to expend the funds in congressional elections to defend and advance the interests of federal retirees.

By the mid-1980's, NARFE-PAC had become a force in congressional elections...NARFE-PAC was among the nation's top 20 membership association PACS. Unfortunately, that early achievement has not been matched in recent years. To arrest this decline, in 2003, NARFE's National Executive Board voted to renew emphasis on NARFE-PAC ... by setting aside one month each year as NARFE-PAC Month. 2003-2004 election cycle was a growth cycle.... The just concluded 2005-2006 election cycle showed a higher average contribution, but a slight drop in the number of donors.

NARFE - CHAPTER 860
Betsy Deacon, Editor
192 Doe Run NE
Charleston, TN 37310

NARFE-PAC operates under a written charter and complies with all aspects of the Federal Election Campaign Act. If you are interested in contributing to NARFE-PAC, you can use the coupon on page 20 of the NARFE Retirement Life, March 2007 magazine.

#####

If you have any suggestions or ideas for our newsletter, please let me know. You can contact me, Betsy Deacon, at dogcomp@bellsouth.net or call me at 336-3879. If you would like to receive the newsletter by email instead of getting a hard copy thru the U.S. Post Office, let me know. This will save our chapter the cost of postage. Several people have already signed up for email copies.

CHAPTER 860 OFFICERS

*President - Danny Britt
Vice-President - Dean McAlister
Secretary - Joan Burner
Treas/Programs - Helen Evans
Service Officer - Don Rollens
Legislative - Maxine Eaves
Sunshine - Ruth Hale
Membership Chair - Jim Burner*

SPECIAL THANKS TO BANK OF CLEVELAND (WHERE WE HAVE OUR ACCOUNT) FOR PROVIDING PRINTING SUPPORT